



a contemporary art space

SITE SANTA FE PRESENTS
PRETTY IS AS PRETTY DOES

February 14–May 10, 2009
Public Opening: Friday, February 13, 5–7 pm

DECEMBER 12, 2008

SITE Santa Fe
1606 Paseo de Peralta
Santa Fe, New Mexico 87501

Please Note: All information is subject to change. Please confirm with the Press Office prior to publication.

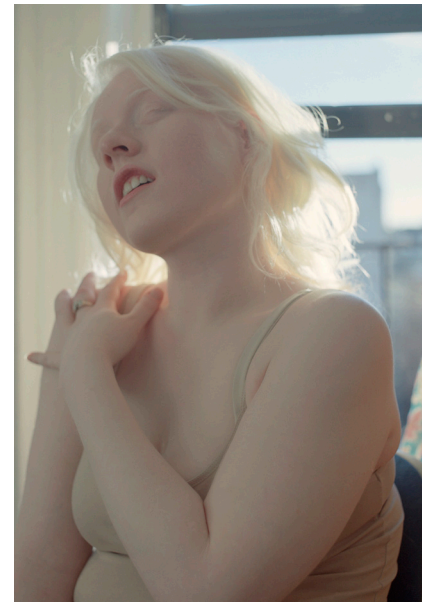
ANNE WRINKLE
505.989.1199 x 22
wrinkle@sitesantafe.org

SITE Santa Fe is pleased to present *Pretty Is As Pretty Does*, a group show of over fifty works by nine artists who push the boundaries of aesthetics, making the most of twisted beauty and mastery of craft that often contradict the subject matter of their work. *Pretty Is As Pretty Does* promises its viewers a lush visual experience permeated by a kind of sinister appeal. The exhibition will be on view at SITE from February 14–May 10, 2009. There will be a **media preview** with the artists on Thursday, February 12, from 11 am–12 noon. The free public opening is Friday, February 13, from 5-7 pm.

The phrase “pretty is as pretty does” is an idiom typically used to describe a beautiful girl with a nasty disposition—she may look pretty, but it doesn’t follow that she acts pretty. Organized by Phillips Director Laura Steward Heon, the show takes its inspiration from this phrase and features works that suffuse base, provocative content in otherworldly beauty. The artists whose works are included in this exhibition have, with exquisite care and cunning charm, made objects that glitter with unsettling appeal. In all of the works, an effervescent prettiness and sneering nastiness circle around each other, and both qualities are magnified by their combination. The works were brought together for their peculiar aesthetic dialectic. For example, in the heart of the show, ceramic objects made by **Kathy Butterly** share space with **Tanyth Berkeley’s** photographs of an albino model named Grace and other improbably beautiful women.

Butterly’s small ceramic objects, mostly tea pot-sized, have been fired as many as thirty times each to achieve rich, glowing, and totally bizarre combinations of colors, which are echoed in their highly precise and deeply weird ceramic forms. Berkeley’s models, whose unique appearances make them at once bizarre and beautiful, are dignified women, but with silly expressions, tawdry red negligees, and legs like ice cream cones.

This kind of pairing runs throughout the show, as does the use of refined craftsmanship, and precious or decorative materials, such as stained glass, silk, ceramic, and rhinestones. We see it in **Marilyn Minter’s** giant paintings and photographs of women’s feet; expert sour apple pedicures covered with dirt juxtapose the beautiful and the base. The bloodied skulls and sinister icebergs of **Angelo Filomeno’s** exquisitely embroidered silk works belie their medium. The interconnectedness of decay and rebirth are evident in **Chiho Aoshima’s** sumptuous anime nightmare. **Judith Schaechter’s** eerie illuminated stained glass follies explore the tension between sexuality, power, and vulnerability.



Tanyth Berkeley, *Grace in Window*, 2006
c-print, 24 x 20 inches, courtesy of the artist and Bellwether, New York



Marilyn Minter, *Spiked*, 2008
enamel on metal, 96 x 60 inches,
Courtesy of the artist.



a contemporary art space

DECEMBER 12, 2008

SITE Santa Fe
1606 Paseo de Peralta
Santa Fe, New Mexico 87501

Please Note: All information
is subject to change. Please
confirm with the Press Office
prior to publication.

ANNE WRINKLE
505.989.1199 x 22
wrinkle@sitesantafe.org

In addition to these works, SITE Santa Fe has commissioned **Ligia Bouton** to create a decorative motif that will appear in every gallery. She has proposed a series of ruptures of varying sizes in the walls from which fur and unctuous substances will spill. **Rina Banerjee** and **David Leigh** will also create new site specific commissions for the exhibition.

Art & Culture

Tuesday, February 17, 2009, 6 pm

The Function and Disfunction of Beauty: Panel Discussion featuring Kathy Butterly, Rina Banerjee, and David Leigh moderated by Laura Heon

SITE is pleased to present a panel discussion in conjunction with *Pretty Is As Pretty Does* including three of the artists in the exhibition as they address aesthetics as it relates to their work.

Co-sponsored by Lannan Foundation

Tuesday, March 10, 2009, 6 pm

How Good is Bad? Or How Bad Does It Have to Be To Be Good?

Lecture and Appraisal Event with Michael Frank, Curator, Museum of Bad Art (MOBA)

Michael Frank, curator-in-chief, will be disclosing his trade secrets of identifying bad art, locating bad art, and discussing the finer details of bad art interpretation. Bring a piece of art to this low-rent antique road show to learn whether some of the detritus in your attic or basement is, in fact, museum worthy!

The Museum of Bad Art (MOBA) has been featured in *People*, *Entertainment Weekly*, *NPR*, *Rolling Stone*, and many others as an awfully big success. Located in the basement of two theaters near Boston, MA, MOBA is a unique institution dedicated to the celebration of artistic effort, however misguided. The collection is comprised largely of canvases found discarded on curbside trash piles or obtained for a pittance at thrift stores and yard sales.

Frank is the co-author of *The Museum of Bad Art Masterworks: Art Too Bad to be Ignored*, by Michael Frank and Louise Reilly Sacco (Berkeley, Ten Speed Press, 2008), and he will be signing books at the event.

Co-sponsored by Wolf International Advisors

Tuesday, April 14, 2009, 6 pm

TXtual Healing

A Performance by Paul Notzold

TXtual Healing was created by Paul Notzold and has since become an ongoing series of interactive performances that encourage the creation of dialogue through text messaging from mobile phones. The project harnesses what has come to be known as the Short Message Service (SMS) capabilities of the cell phone as a medium to interact with and explore our shared public and physical space, not as a means to escape it. *TXtual Healing* builds community through public story-telling.

TXtual Healing encourages the public sharing of thoughts, experiences and ideas using networked mobile devices that typically support more private communications. Positioning the projections next to windows, or integrating the SMS interactivity with religious, political and socially charged graphics, invites people to share their own uncensored views of the information around them in the form of interactive theater.

Co-sponsored by Linda Durham Contemporary Art



a contemporary art space

DECEMBER 12, 2008

SITE Santa Fe
1606 Paseo de Peralta
Santa Fe, New Mexico 87501

Please Note: All information
is subject to change. Please
confirm with the Press Office
prior to publication.

ANNE WRINKLE
505.989.1199 x 22
wrinkle@sitesantafe.org

Tuesday, May 5, 2009, 6 pm
Artist Talk by Judith Schaechter

Judith Schaechter will discuss her work starting from age four—when she drew *Winston Churchill in His Coffin* and *Vomit Picture*—to the present day when she has just completed a major permanent installation for the Museum of Arts and Design. She will discuss how she develops inspiration into material objects, as well as her take on design, technique, and historical precedent. Judith's work is figurative, possibly narrative, and sometimes difficult—she will address these issues in a way that seems to answer everything yet dispels none of the mystery.

Co-sponsored by William Shearburn Gallery

Funding

This exhibition is generously funded in part by the LLWW Foundation and EVO Gallery, as well as by New Mexico Arts, a division of the Department of Cultural Affairs, and the National Endowment for the Arts. The Art & Culture series is made possible by a generous endowment from the Marlene Nathan Meyerson Family Foundation. This announcement is partially funded by the City of Santa Fe Arts Commission and the 1% Lodgers' Tax.

About SITE

SITE Santa Fe is located at 1606 Paseo de Peralta, Santa Fe, New Mexico 87501. Winter Hours: Thursday and Saturday, 10 AM–5 PM; Friday, 10 AM–7 PM; Sunday, 12 PM–5 PM; closed Monday, Tuesday, Wednesday. Museum admission is \$10 for adults and \$5 for students, teachers, and seniors; members are free. Free admission is offered on Fridays, made possible by a grant from The Brown Foundation, Inc., of Houston. Tours by SITE Guides are available free of charge to the public with paid admission and are also regularly scheduled on Fridays at 6 pm, and Saturdays & Sundays at 2 pm. SITE Santa Fe gift certificates are available. Call 505.989.1199 for more information.