



a contemporary art space

June 9, 2009

SITE Santa Fe  
1606 Paseo de Peralta  
Santa Fe, NM 87501

Please Note: All information is subject to change. Please confirm with the Press Office prior to publication.

Anne Wrinkle  
505.989.1199 x 22  
wrinkle@sitesantafe.org

www.sitesantafe.org  
www.nervousfilms.com

## SITE SANTA FE PRESENTS A NEW INSTALLATION BY BRENT GREEN

June 13 – September 6, 2009

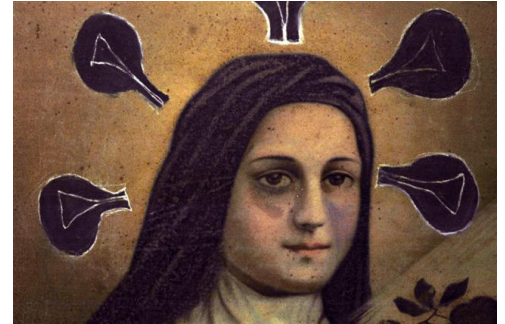
Press Preview, Friday, June 12, 2009, 11 am

Members Opening, Friday, June 12, 2009, 5-7 pm

**Free Public Opening: Friday, June 26, 5-7 pm**

Santa Fe, NM – SITE Santa Fe is pleased to present a new installation by Brent Green, who will create three new sculptures, and screen three films including one premiere. There will be a media preview of the exhibition with the artist on Friday, June 13, at 11 am. The free public opening of the exhibition is Friday, June 26 from 5–7 pm.

Pennsylvania-based artist Brent Green is known for his stop-motion short films in which he combines hand-drawn animations, rickety handmade sets, and which he narrates in his distinctive, tremulous voice. These works reflect his abiding interest in the strange characters and local stories of his childhood in Appalachia. His 2007 film *Carlin*, which first drew national attention to the self-taught animator, was a darkly comic tale about the slow death by diabetes of his Aunt Carlin. Shot in the farmhouse where Green grew up with life-sized handmade wooden characters, the film is imbued with the southern gothic haze that suffuses all of his work.



Brent Green, Still from "Tinkerer" Used to be a Trade, 2009, Animated film, SITE Santa Fe Commission, Courtesy of the artist

For his SITE Santa Fe commission, Green will exhibit both animated films and new sculptural works. Green draws equally from Wagner (in the way that he works in many mediums, giving each equal importance, forming a "total work of art") and from Faulkner (in the bleak, heart-breaking humor of the stories that he tells). The group of three new sculptures for SITE, entitled *Watts and Volts Across a Field*, features three over life-sized figures made from layers of plywood, typical of the quotidian materials that Green favors. (The title itself is a line from Green's new film about the life of Thomas Edison, called "Tinkerer" Used to be a Trade, which will also premiere at SITE.) These three figures, like many of Green's animated characters, are lonely heroes, usually involved in a solitary, Sisyphean task. One of these figures is besieged by strange, flat, wooden crows and large, muslin-covered dirigibles that hang from a motorized mobile with curving steel arms that span out over 15 feet. In another sculpture, a figure steps from a field of forlorn wooden flowers at his feet into a cone of light like a cartoon car headlamp.

In addition to premiering "Tinkerer" Used to be a Trade, Green will screen *Carlin* and the 2009 film *Weird Carolers*. *Weird Carolers* tells the story of Beethoven going deaf at the end of his life, but continuing to compose, biting his piano to feel its vibrations in his teeth, throwing hammers and shoes around in his second-story apartment in Salzburg, and inducing nightmares in the downstairs neighbor. In this most recent body of work, Green expands beyond the characters of his strange Appalachian childhood into historical and mythical ones.

Brent Green has had one-person exhibitions at the Sculpture Center in Cleveland and the Contemporary Art Museum, St. Louis. His films have been screened at numerous venues including the Sundance Film Festival, UCLA's Hammer Museum, and the Walker Art Center. Green was the recipient of a Creative Capital grant in 2005.

### Funding

This exhibition is generously funded by the Board of Directors as well as by New Mexico Arts, a division of the Department of Cultural Affairs, and the National Endowment for the Arts. This announcement is partially funded by the City of Santa Fe Arts Commission and the 1% Lodgers' Tax.

### About SITE

SITE Santa Fe is located at 1606 Paseo de Peralta, Santa Fe, New Mexico 87501. Hours: Thursday and Saturday, 10 AM–5 PM; Friday, 10 AM–7 PM; Sunday, 12 PM–5 PM; closed Monday, Tuesday, Wednesday except Wednesdays 10 AM–5 PM in July & August. Museum admission is \$10 for adults and \$5 for students, teachers, and seniors; members are free. Free admission is offered on Fridays, made possible by a grant from The Brown Foundation, Inc., of Houston. Tours by SITE Guides are available free of charge to the public and are also regularly scheduled on Fridays at 6 pm, and Saturdays & Sundays at 2 pm. SITE Santa Fe gift certificates are available. Call 505.989.1199 for more information.